

Component Placing, Electrical

Applicable for Z550i, Z550c, Z550a, Z558i and Z558c

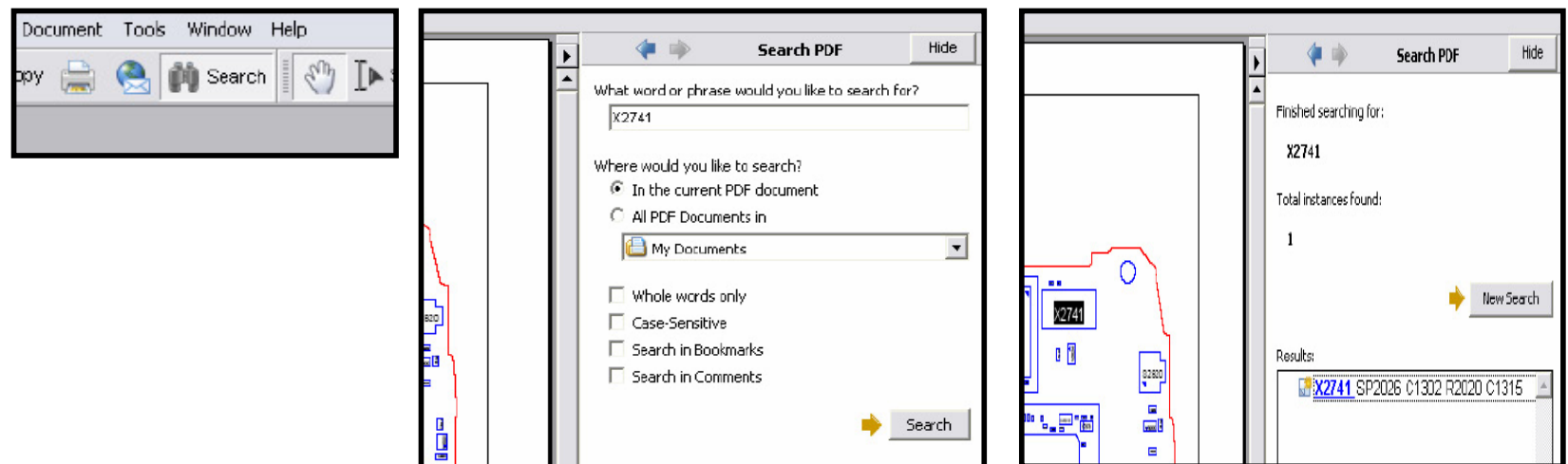
Contents

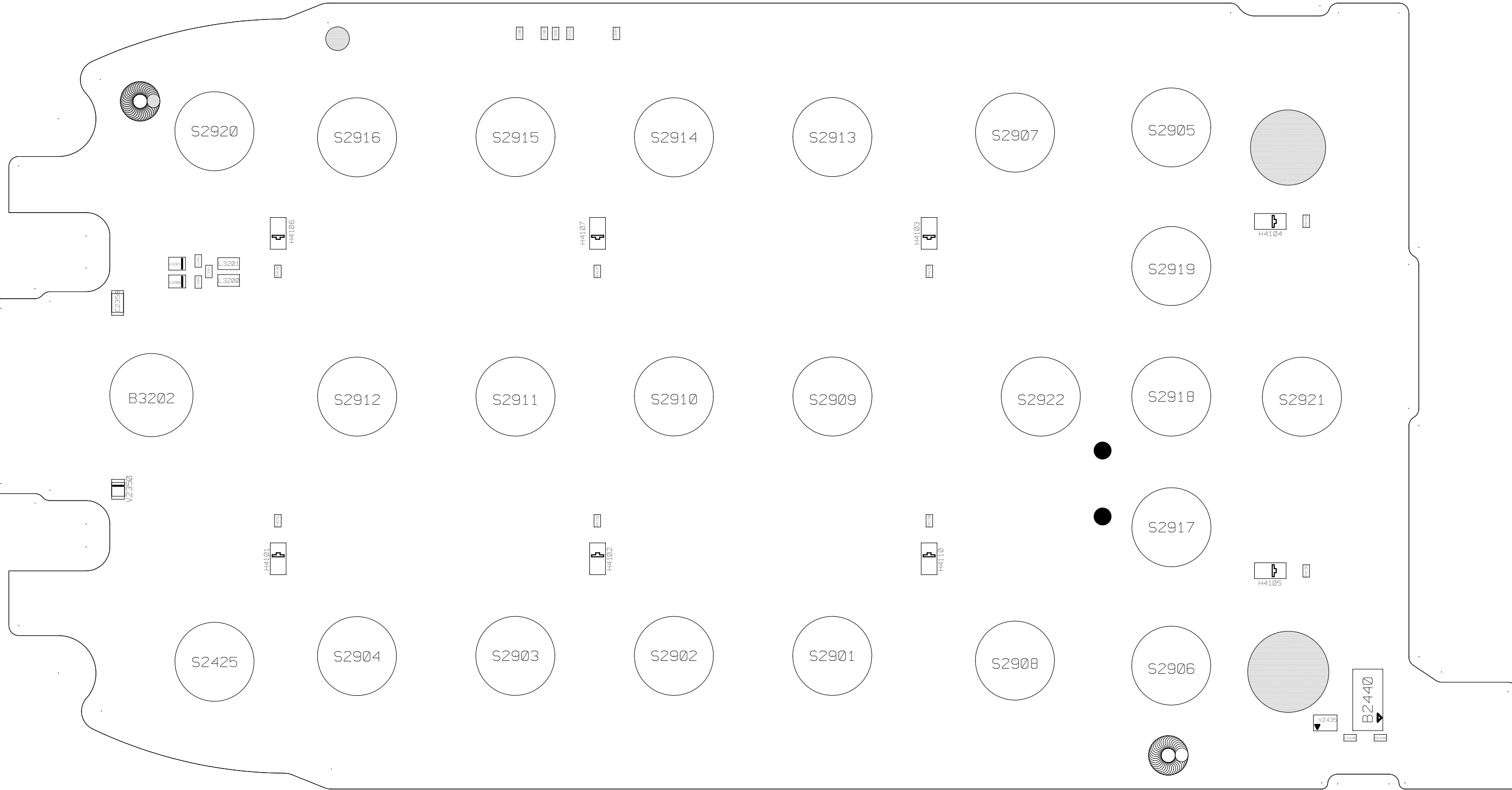
1	Mounting drawing table.....	2
2	Mounting drawing.....	3
3	Revision history	5

1 Mounting drawing table

Board Number
ROA 128 1921 C

By using the “Search” function and enter the component name you can find the position of the component
(Use Adobe Reader 7.0 or a later version). Example: You can see the component name highlighted on the circuit board (use zoom to enlarge).





3 Revision history

Rev.	Date	Changes / Comments
A	2006-06-26	Initial release
B	2006-09-28	Z550a added
C	2006-10-12	Z558i and Z558 a added